

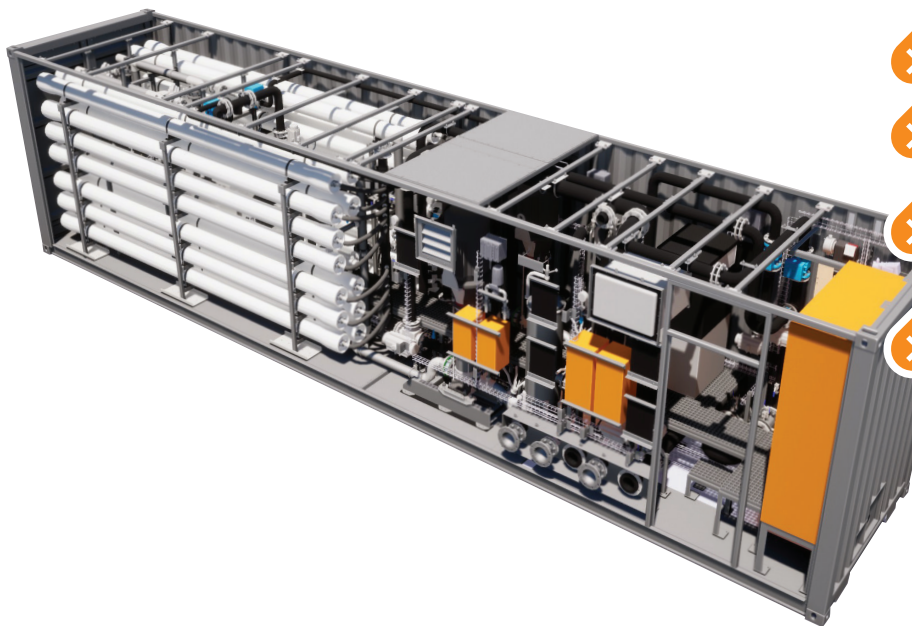
# AquaMobile

RO

Drop  
in  
Desalination

**AquaMobile<sup>RO</sup> is a fully automated desalination system designed to produce consistent, high-quality fresh water from a range of brackish water sources.**

Reverse Osmosis (RO) provides a positive barrier against salinity, trace organics, pathogens, viruses and heavy metals. PROXA's containerized AquaMobile<sup>RO</sup> solution offers a complete turn-key solution to your water treatment needs, whether used as a stand-alone system, or part of an integrated treatment process, the AquaMobile<sup>RO</sup> offers flexibility and robust reliability for peace of mind.



## APPLICATIONS

- Desalination of surface or ground waters to potable standard
- Economical pre-treatment alternative for boiler and cooling tower make-up water
- Upgrade of waste water for re-use
- Treated water discharge to sensitive environment
- Removal of contaminants which may damage process equipment
- Compact, ideal for footprint-constrained applications



Distribuidor España  
Tels.: +34 932 018 466 / 932 010 867  
info@aquabona.biz / www.aquabona.biz

**proxa**  
future focused

## TYPICAL CLIENTS



Borehole to potable water treatment



Mining and metal processing operations



Petroleum refining



Chemical manufacturers



Power plants



FMCG production sites



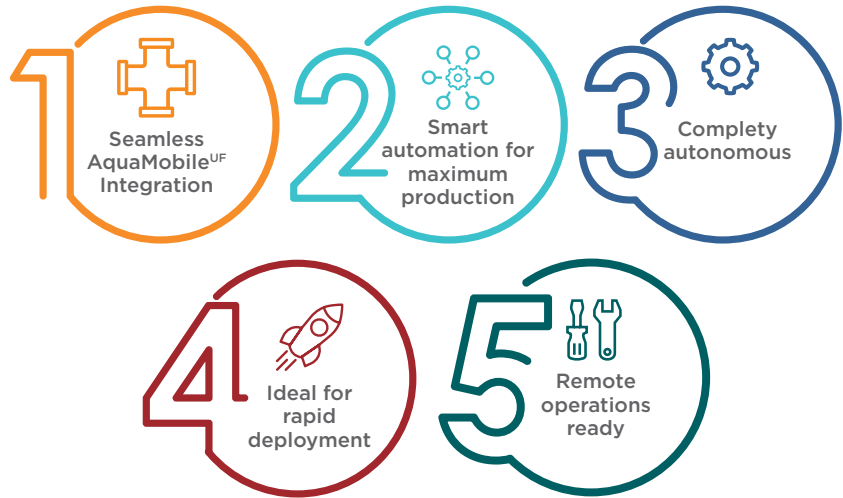
Agri-processing



Commercial and municipal clients



Food and beverage sites



## BENEFITS

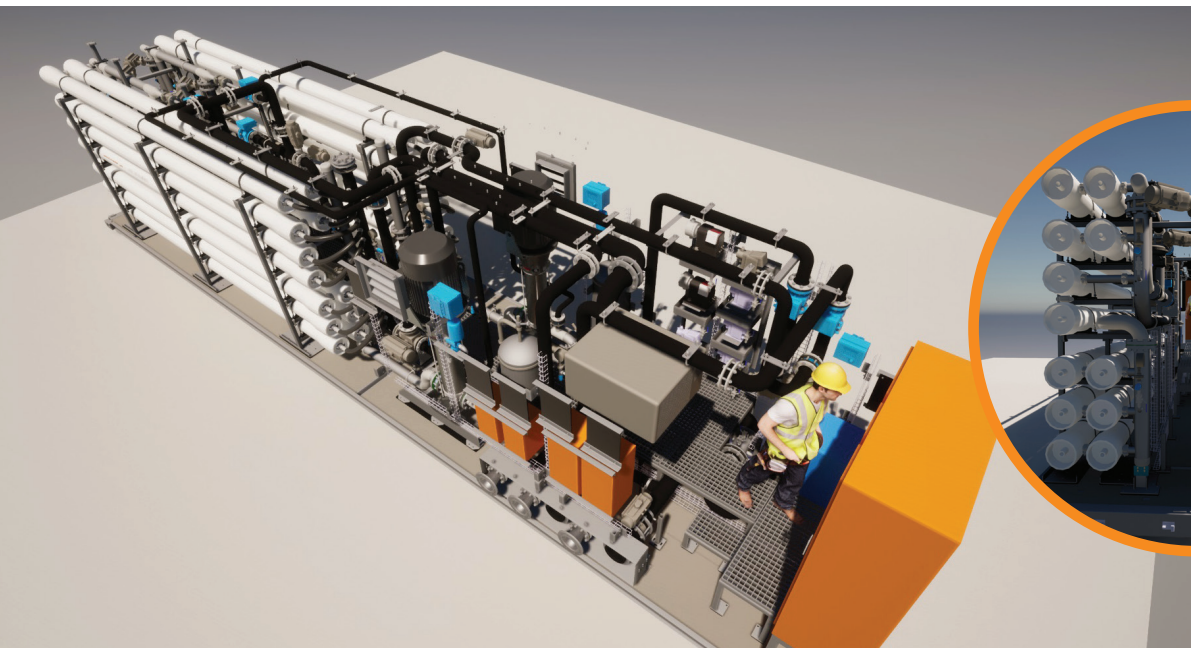
- > Superior product water quality
- > Smart automation for maximum water recovery and remote operation
- > Small footprint
- > Configurable in either single or double pass mode for demin water equivalent production
- > Stand-alone unit equipped with critical utilities
- > Automated cleaning system
- > Minimal manual intervention
- > CE compliant
- > Can be close coupled with Ultrafiltration AM



**AQUABONA<sup>SL</sup>**

Distribuidor España  
Tels.: +34 932 018 466 / 932 010 867  
info@aquabona.biz / www.aquabona.biz

**proxo**  
future focused



<b>Capacity</b>	Average Feed Flowrate	m <sup>3</sup> /h	154 (single pass), 68 (double pass)
	Product Flowrate	m <sup>3</sup> /h	*125 (single pass mode), *57 (double pass mode) *dependant on feed water quality
<b>Power</b>	Installed	kW	141.7
	Absorbed	kW	95.4
<b>Dimensions and Weight</b>	Width	Mm	2 400
	Length	mm	12 200
	Height	mm	2 700
	Approximate Dry Weight	kg	14 782
<b>Connections</b>	Feed Inlet	3-4 bar	DN150 Flanged
	Filtrate Outlet	1.5 bar	DN150 Flanged
	Waste Outlet	1.5 bar	DN150 Flanged
	Service Water Inlet	1.5 bar	DN150 Flanged
	Self-Cleaning Strainer Waste Outlet	3-4 bar	DN150 Flanged
	Plant Air Inlet (Optional use)	10 bar	

## CONTACT US

MIDDLE EAST, NORTH  
AFRICA AND  
CENTRAL ASIA  
UNITED ARAB EMIRATES  
Sharjah

AFRICA & AMERICAS  
SOUTH AFRICA  
Johannesburg

EUROPE  
BELGIUM  
Liege

AUSTRALIA, PACIFIC &  
FAR EAST  
AUSTRALIA  
Adelaide

proxawater.com



AQUA  
BONA<sup>SL</sup>

Distribuidor España  
Tels.: +34 932 018 466 / 932 010 867  
info@aquabona.biz / www.aquabona.biz

proxo  
future focused